

TREMORSHAKER

DOUBLE DECK TREMOR SHAKER™ SCREENS

INNOVATION MEETS DURABILITY.

Our Tremor Shaker™ is available in sizes ranging from 3'x6' to 5'x12' and in single or double deck configurations. It's equipped with an eccentric flywheel design, C-style shaker springs, and Huck-bolted construction.

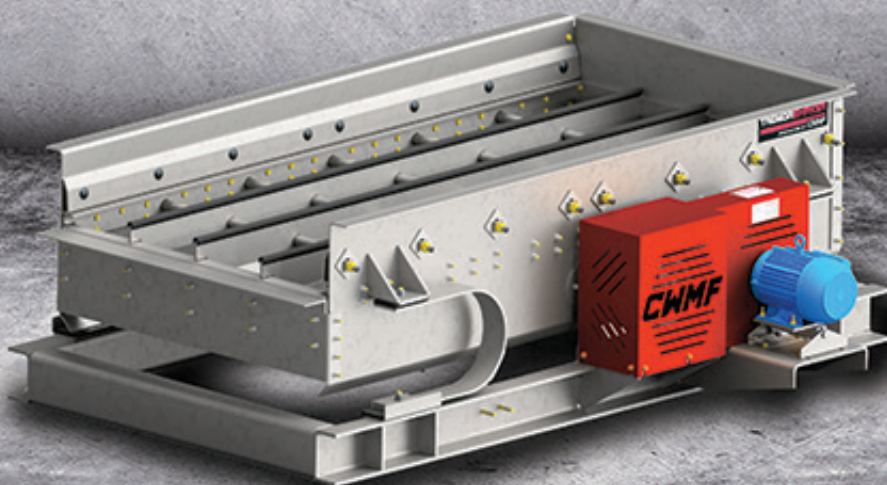
Additionally, a pivoting motor base is used to help absorb and isolate the vibration, while maintaining constant belt tension.



TREMORSHAKER

SINGLE DECK TREMOR SHAKER™ SCREENS

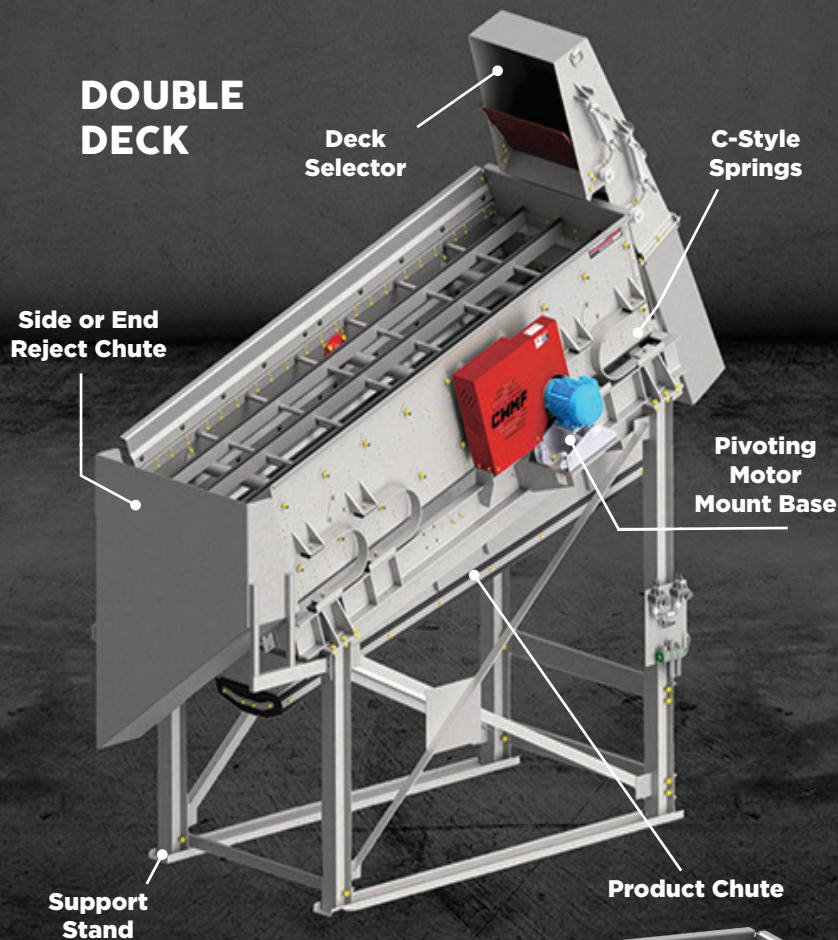
SHAKE UP THE STATUS QUO.



cwmfcorp.com

TREMORSHAKER

DOUBLE DECK



AVAILABLE SIZES

SIZE & OPTIONS	SINGLE DECK	DOUBLE DECK
3' X 6'	✓	
4' X 8'	✓	
4' X 10'	✓	✓
4' X 12'	✓	✓
5' X 10'	✓	✓
5' X 12'	✓	✓
Side or End Reject Chute	✓	✓
Support Stand	✓	✓
Deck Selector		✓

SINGLE DECK



Scan for more information

WE GO
the **EXTRA MILE**

877.457.3938
cwmfcorp.com

